

Wnt5b Antibody
Rabbit mAb
Catalog # AP92522

Specification

Wnt5b Antibody - Product Information

Application	WB, FC
Primary Accession	O9H1J7
Clonality	Monoclonal
Other Names	
Wnt5b;	
Isotype	Rabbit IgG
Host	Rabbit
Calculated MW	40323 Da

Wnt5b Antibody - Additional Information

Dilution	WB~~1:1000 FC~~1:10~50
Purification	Affinity-chromatography
Immunogen	A synthesized peptide derived from human Wnt5b
Description	Ligand for members of the frizzled family of seven transmembrane receptors. Probable developmental protein. May be a signaling molecule which affects the development of discrete regions of tissues. Is likely to signal over only few cell diameters.
Storage Condition and Buffer	Rabbit IgG in phosphate buffered saline , pH 7.4, 150mM NaCl, 0.02% sodium azide and 50% glycerol. Store at +4°C short term. Store at -20°C long term. Avoid freeze / thaw cycle.

Wnt5b Antibody - Protein Information

Name WNT5B

Function

Ligand for members of the frizzled family of seven transmembrane receptors. Probable developmental protein. May be a signaling molecule which affects the development of discrete regions of tissues. Is likely to signal over only few cell diameters (By similarity).

Cellular Location

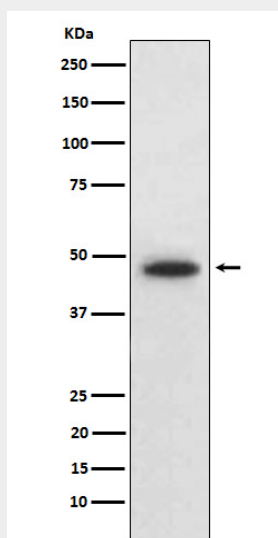
Secreted, extracellular space, extracellular matrix

Wnt5b Antibody - Protocols

Provided below are standard protocols that you may find useful for product applications.

- [Western Blot](#)
- [Blocking Peptides](#)
- [Dot Blot](#)
- [Immunohistochemistry](#)
- [Immunofluorescence](#)
- [Immunoprecipitation](#)
- [Flow Cytometry](#)
- [Cell Culture](#)

Wnt5b Antibody - Images



Western blot analysis of Wnt5b expression in HepG2 cell lysate.